



Coffee Brief

Date: June 29, 2022

Preparedness Levels & Alaska Fire Activity

Alaska	4
National	2

<p>Light Initial Attack Activity</p> <p>New Fires and Acres: 2 fires for less than 1 acre</p>

There are currently 15 staffed fires. Yesterday's large fire growth was ~124,093 acres.

Sources: National and AICC Situation Report

Resources

Aviation within Alaska	Total
T3 Airtanker (Multi-Engine)	4
T3 Airtanker (Single Engine)	8
Fixed Wing, Air Tactical	7
Fixed Wing, Cargo	5
Fixed Wing, Lead plane	1
Fixed Wing, Passenger	13
Fixed Wing, Smokejumper	1
Helicopter, Type 2 Restricted	1
Helicopter, Type 2 Standard	13
Helicopter, Type 3 Standard	7
Airtanker, Type 1 or 2	1

Crews Committed within Alaska		
Type 1		AK
Type 2	6	AK
Type 2IA	3	AK
Module	1	AK
Type 1	16	L-48
Type 2		L-48
Type 2IA	9	L-48
Module	7	L-48
Total Crews	42	

Teams Committed within Alaska	
CIMT	
IMT 1	1
IMT2	5
IMT3	4
Total IMTs	10

*As identified in IROC

AVIATION:

J-07 arrived 6/28 and will be available today

SMOKEJUMPERS:

Anticipated smokejumpers available: 25
~ 91 SMJ's committed

CREWS:

Crew Movement

- Baker River IHC to Poorman Complex
- Central Oregon 2 and Rogue River to Clear
- NW OR MAF#1 to Minto Lakes
- WIF Middle Fork to Mat-Su Preposition
- Vale off #320, head to Poorman Complex 6/30
- Chena IHC to Snohomish

OVERHEAD/TEAMS:

AK Green T2 IMT - in brief at the Lime Complex tomorrow. Shadow 6/29, transfer command 6/30

AK Black T2 IMT - travel 7/1

Reassigned NR- T2 - Alamas - IMT: to Minto Lakes to provide oversight before the T1- McGowan arrives

T3 IMT -ID 1 - filled on TAD Zone - Snohomish fire.

Preposition IMT - generated a T2 IMT order for a team to preposition in ANC - needed date 7/1

MISCELLANEOUS:

Healy Lake #386 Contained and controlled, smokejumpers demobilized

Allen #348 Plan to demobilize remaining smokejumpers today

East Fork #160 All containment and confinement objectives met

Source: IROC Reports, [National Smokejumper Status Report](#) & AICC Documentation

Weather Summary

High pressure over Canada has backed off just enough to allow a short wave to move through northern Alaska. This wave will help to feed the chance for wet thunderstorms along the eastern Brooks Range and decrease temperatures in the Interior by a few degrees. Significant moisture is not expected to get as far south as any active fires. At the same time, temperatures in South Central and inland Southwest will be on the rise today, with more 80s starting to show up in those areas.

Today expect to see the high pressure over Canada build back westward again, and even stronger on Thursday. This means 80-degree temperatures will be back in force, and on Thursday even 70s are expected in coastal areas of the west. The term "baked Alaska" will apply to most of the state.

The area of thunderstorm coverage will be increasing, with an active lightning day in Copper River Basin, southeastern Interior, and South Central today, including the Susitna Valley down onto the Kenai Peninsula. By Thursday, strikes will be well into Southwest Alaska as well. In the Interior, most activity will be confined to the ALCAN border. Though these storms are likely to be damp, fuels are extremely dry and will be the main driver in new ignitions.

On Friday, another low in the Bering Sea will attempt to push moisture into the West Coast. Strong southerly winds will be likely across the western third of Alaska once again. Though some rain will make it into coastal areas, it's unlikely that much moisture will get far enough inland to impact fires. Depending on this system, the winds over the state may cause Chinook winds through the western Alaska Range, which could impact many large fires.

Smoke from fires continues to be a challenge both for healthy living and operations as visibility decreases. At this time, most of the smoke is affecting a sliver of western Alaska and much of the central and northeastern Interior. Today smoke will move into South Central and Copper River Basin. The worst conditions will remain north and west of the Alaska Range.

Source: Alaska 7-Day Outlook

Fuels/Fire Potential

Surface fuels continue to respond to the warmer and drier weather. FFMC values are highest across the eastern Interior and Copper River. FFMCs are holding relatively steady in the Mat-Su and on the Kenai Peninsula. Expect FFMCs to remain elevated across much of the state in the coming days. Southwest Alaska is still experiencing growth on existing fires due to dryness of live fuels, which is not captured in FFMC.

Subsurface drying is the main driver of fire spread. The Duff Moisture Code (DMC), which is the main component of the Buildup Index (BUI) this time of year, is at extremely dry levels across areas of the Interior, Southwest and South Central. The footprint of extreme values is increasing daily given current weather. The dry duff layers increase fireline intensity and resistance to control, requiring more time and effort to manage. South Central currently does not have large fires, but fuels are conducive to support spruce-driven fire spread with any new ignitions.

BUIs are increasing across greater areas of Alaska and continue to support large fire-growth across the state.

When encountering a mismatch between a point value based on actual weather observations and the background grid, please discount the grid and go with the points.

Source: Alaska 7-Day Outlook

Fuels Status [Alaska Fire and Fuels Map](#)

An Updated Fuels and Fire Behavior Advisory was Issued Yesterday

Fuels and Fire Behavior Advisory

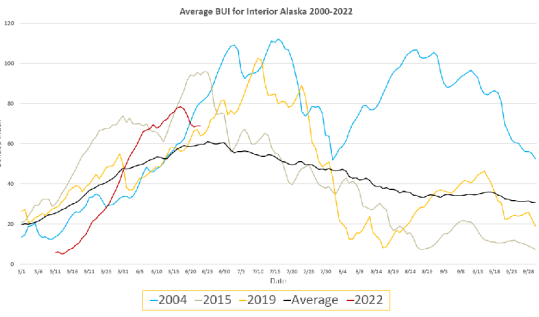
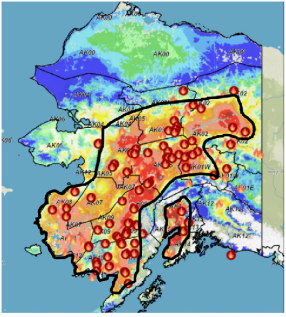
Interior, Southwest, and South-Central Alaska

Valid: June 25 – July 8, 2022

Subject: Exceptional landscape flammability and widespread ongoing large fire growth.

Discussion: The Buildup Index (BUI) is the best indicator of seasonal severity and overall flammability of fuels in Alaska. It represents deeper drying in the duff layers and greater fuel availability. Large fire growth occurs from mid-June to mid-July surrounding the summer solstice when long days and rapid drying can produce elevated BUIs. Southwest Alaska normally experiences shorter periods of high flammability but has had numerous fires burning since the end of May. By mid-June fire activity began to spread eastward in the Interior. Numerous fires are now burning in the central Interior. The area of activity is expected to expand eastward into the Yukon Flats. South Central has been drying rapidly and BUIs are now at record levels.

Difference from normal conditions: The attached graph shows the current 2022 BUI trend for the Interior of Alaska compared to other busy fire seasons. 2022 has been above average BUI since May 31, and higher than 2019 levels for the same period. Convective precipitation has moderated values in some areas but forecast high pressure will rapidly increase values. Much of the landscape has experienced large fire growth earlier than usual. Multiple days of wetting rain adding up to more than one inch will be needed for lasting relief.



Concerns to Firefighters and the Public:

- Spruce stands are extremely flammable, will ignite readily, exhibit rates of spread more than one mile per hour, torch, and spot prolifically up to ¼ mile or more, and exhibit intense crown fire behavior.
- Temperatures above 80 degrees and RH below 30% are important thresholds for rapid spread and crown fire behavior. Strong winds are not required for large fire growth.
- Long-term drying has stressed green fuels and is encouraging spread into riparian areas and less flammable hardwood forests. These fuel types may no longer be barriers to fire spread.

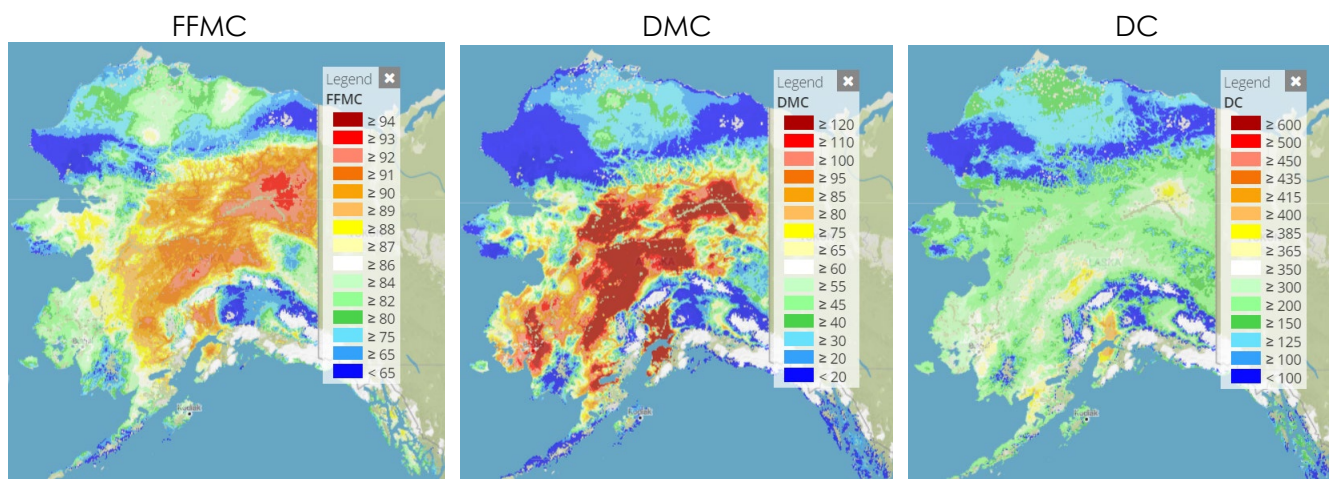
Mitigation Measures:

- Ensure that you can recognize hazardous fuel types including tundra that is exceptionally dry.
- Understand the triggers and thresholds for problem fire behavior.
- Monitor forecasts and indices to anticipate areas of increased flammability and extreme fire behavior.
- Maintain clear communications when working around active fires.

Area of Concern: Interior, Southwest and South Central Alaska

Issued By: Alaska Interagency Coordination Center Predictive Services

Click on the following images for direct links to the maps.



For additional fuels information visit <https://akff.mesowest.org/>

Sources: AICC Predictive Services – Fuels/Fire Danger web page, Alaska Fire & Fuels web page

Prioritized Incident Details

1. Initial Attack
2. Clear #346 (FAS) IMT2 Lawson currently has 2 subdivision evacuations taking place
3. Minto Lakes #349
4. Lime Complex (SWS) IMT2 Sanford (fires 189, 190, 197, 205, 206, 207, 216, 239, 242, 245, 247, 273)
5. Bean Complex (TAD) IMT2 Lefevre (fires 310, 312, 315, 327, 343, 366)
6. Poorman Complex (GAD) (fires 352, 369, 335)
7. Snohomish (TAD) (fires 185, 225)

Source: AMAC Incident Prioritization List, ICS-209s

The Coffee Brief is posted at PLs 4 and 5 only.

